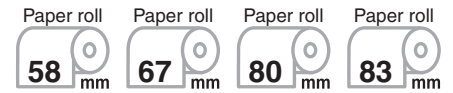


# PPU-700/PHU-331

## KIOSK UNIT



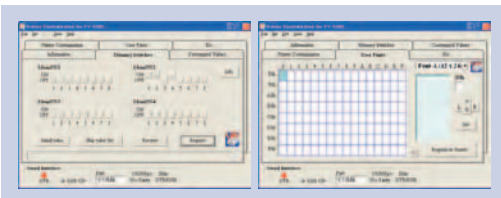
### Complete unit PPU-700/PHU-331

\*The bottom plate is not included.

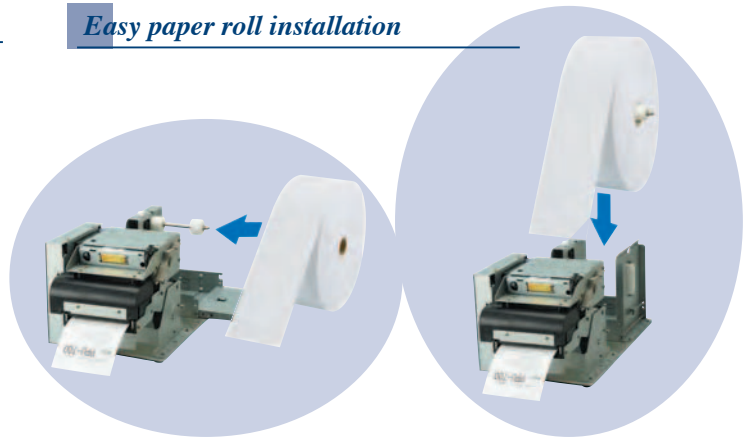
### Features

- Selectable paper width
- 150mm/s high-speed printing
- Thicker paper capability (0.065-0.150mm)
- Presenter unit incorporated
- User-installable interface card
- Bitmap registration
- Smoothing font
- Two color printing
- Easy paper handling
- Compact design
- Large roll paper diameter up to 8" (PHU-331)

### Customization software for easy printer configuration



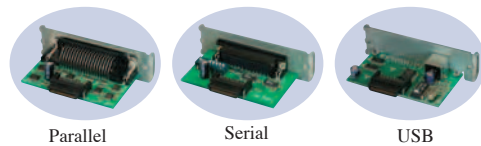
### Easy paper roll installation



PPU-700/PHU-331S

PPU-700/PHU-331T

### Interface cards



Parallel

Serial

USB

### Specifications

Model	PPU-700/PHU-331
Printing method	Line thermal dot printing
Printing width	80mm/640 dots (paper width 83mm) 72mm/576 dots (paper width 80mm) 60mm/480 dots (paper width 67mm) 54mm/432 dots (paper width 58mm)
Dot pitch	8 × 8 dots/mm (203 dpi × 203 dpi)
Printing speed	Max. 150mm/sec., (35.4 lines/sec.)
Number of columns	80mm paper: Font A - 48 columns Font B - 64 columns Font C - 72 columns
Character size (W × H)	1.25mm × 3.00mm (Font A: 12 × 24 dots) 0.88mm × 2.13mm (Font B: 9 × 17 dots) 0.88mm × 2.00mm (Font C: 8 × 16 dots)
Character table	Code page 437, 850, 852, 857, 858, 860, 863, 864, 865, 866, Katakana, WPC1252, Thai code 18
Barcode type	UPC-A/E, JAN-13/8, ITF, Code 39, Code 128, CODABAR, Code 93
Logo registration/print	Capable of registering user-defined characters print and logos into flash memory.
Line spacing	4.23mm (1/6 inch); can be set by a command.
Paper	Thermal paper roll: Paper width 58/67/80/83mm Paper roll diameter 203mm or less Paper thickness 0.065 - 0.150mm Core diameter: 12mm (paper thickness: 0.065 - 0.080mm) 25.4mm (paper thickness: 0.080 - 0.150mm) Recommended paper : TF-50KS-E-2D, TF-62KS-E (Nippon Paper industries)
Interface	Parallel: IEEE 1284 and Centronics compliant, Serial (RS-232C), or USB
Input buffer	4K bytes (72 bytes selectable with a DIP switch)
NV user memory	256K bytes
Sensors	Paper near end sensor (adjustable, for PHU series) (photo interrupter) Paper end sensor (mechanical switch) Black mark sensor (photo interrupter) Cover open sensor (mechanical switch) Presenter sensor (photo interrupter)
Power supply	24V ± 7%
Power consumption	100W
Weight	PPU700: 2.1 kg (incl. control PCB) PHU-331: 0.95 kg (excl. roll paper)

### Type classification

#### PPU-700 P E M1

(1) (2) (3) (4)

- (1) Model type  
PPU-700
- (2) Interface  
P: Parallel  
R: Serial RS-232C  
U: USB
- (3) Character set  
K: Japan  
U: US/Europe
- (4) Blackmark sensor (Option)  
None: No sensor  
M1: Left side of back  
M2: Right side of back  
(Open lever side)  
M3: Left side of front

#### PHU-331 S

(1) (2) (3) (4)

- (1) Model type
- (2) Length of roll paper shaft  
3: 58-82.5mm (Standard)  
2: 58mm fixed
- (3) Number of PNE sensor